



8708

8192/4096 BIT ERASABLE AND ELECTRICALLY REPROGRAMMABLE READ ONLY MEMORY

• 8708 1024x8 Organization

- **Fast Programming** —
Typ. 100 sec. For All 8K Bits
- **Low Power During Programming**
- **Access Time**—450 ns
- **Standard Power Supplies**—
+12V, ±5V
- **Static**—No Clocks Required
- **Inputs and Outputs TTL Compatible** During Both Read and Program Modes
- **Three-State Output**—OR-Tie Capability

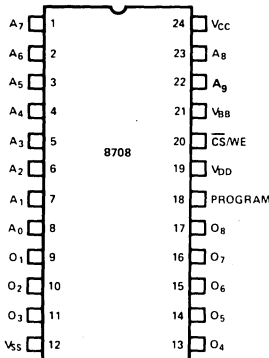
The Intel[®] 8708 is a high speed 8192 bit erasable and electrically reprogrammable ROM's (EPROM) ideally suited where fast turn around and pattern experimentation are important requirements.

The 8708 is packaged in a 24 pin dual-in-line package with transparent lid. The transparent lid allows the user to expose the chip to ultraviolet light to erase the bit pattern. A new pattern can then be written into the devices.

A pin for pin mask programmed ROM, the Intel[®] 8308, is available for large volume production runs of systems initially using the 8708.

The 8708 is fabricated with the time proven N-channel silicon gate technology.

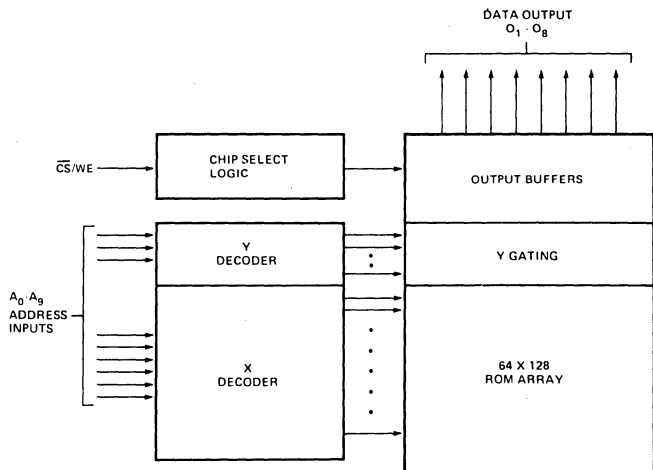
PIN CONFIGURATIONS



PIN NAMES

A ₀ -A ₉	ADDRESS INPUTS
O ₁ -O ₈	DATA OUTPUTS
CS/WE	CHIP SELECT/WRITE ENABLE INPUT

BLOCK DIAGRAM



MCS-80

Absolute Maximum Ratings*

Temperature Under Bias	-25°C to +85°C
Storage Temperature	-65°C to +125°C
All Input or Output Voltages with Respect to V_{BB} (except Program)	+15V to -0.3V
Program Input to V_{BB}	+35V to -0.3V
Supply Voltages V_{CC} and V_{SS} with Respect to V_{BB}	+15V to -0.3V
V_{DD} with Respect to V_{BB}	+20V to -0.3V
Power Dissipation	1.5W

*COMMENT

Stresses above those listed under "Absolute Maximum Ratings" may cause permanent damage to the device. This is a stress rating only and functional operation of the device at these or any other conditions above those indicated in the operational sections of this specification is not implied. Exposure to absolute maximum rating conditions for extended periods may affect device reliability.

READ OPERATION

D.C. and Operating Characteristics

$T_A = 0^\circ\text{C}$ to 70°C , $V_{CC} = +5\text{V} \pm 5\%$, $V_{DD} = +12\text{V} \pm 5\%$, $V_{BB} = -5\text{V} \pm 5\%$, $V_{SS} = 0\text{V}$, Unless Otherwise Noted.

Symbol	Parameter	Min.	Typ.[1]	Max.	Unit	Conditions
I_{LI}	Address and Chip Select Input Load Current			10	μA	$V_{IN} = 5.25\text{V}$
I_{LO}	Output Leakage Current			10	μA	$V_{OUT} = 5.25\text{V}$, $\overline{\text{CS}}/\text{WE} = 5\text{V}$
I_{DD}	V_{DD} Supply Current		50	65	mA	Worst Case Supply Currents:
I_{CC}	V_{CC} Supply Current		6	10	mA	All Inputs High
I_{BB}	V_{BB} Supply Current		30	45	mA	$\overline{\text{CS}}/\text{WE} = 5\text{V}$; $T_A = 0^\circ\text{C}$
V_{IL}	Input Low Voltage	V_{SS}		0.65	V	
V_{IH}	Input High Voltage	3.0		$V_{CC}+1$	V	
V_{OL}	Output Low Voltage			0.45	V	$I_{OL} = 1.6\text{mA}$
V_{OH1}	Output High Voltage	3.7			V	$I_{OH} = -100\mu\text{A}$
V_{OH2}	Output High Voltage	2.4			V	$I_{OH} = -1\text{mA}$
P_D	Power Dissipation			800	mW	$T_A = 70^\circ\text{C}$

- NOTES: 1. Typical values are for $T_A = 25^\circ\text{C}$ and nominal supply voltages.
2. The program input (Pin 18) may be tied to V_{SS} or V_{CC} during the read mode.

A.C. Characteristics

$T_A = 0^\circ\text{C}$ to 70°C , $V_{CC} = +5\text{V} \pm 5\%$, $V_{DD} = +12\text{V} \pm 5\%$, $V_{BB} = -5\text{V} \pm 5\%$, $V_{SS} = 0\text{V}$, Unless Otherwise Noted.

Symbol	Parameter	Min.	Typ.	Max.	Unit
t_{ACC}	Address to Output Delay		280	450	ns
t_{CO}	Chip Select to Output Delay			120	ns
t_{DF}	Chip De-Select to Output Float	0		120	ns
t_{OH}	Address to Output Hold	0			ns

Capacitance^[1] $T_A = 25^\circ\text{C}$, $f = 1\text{MHz}$

Symbol	Parameter	Typ.	Max.	Unit	Conditions
C_{IN}	Input Capacitance	4	6	pF	$V_{IN}=0\text{V}$
C_{OUT}	Output Capacitance	8	12	pF	$V_{OUT}=0\text{V}$

Note 1. This parameter is periodically sampled and not 100% tested.

A.C. Test Conditions:

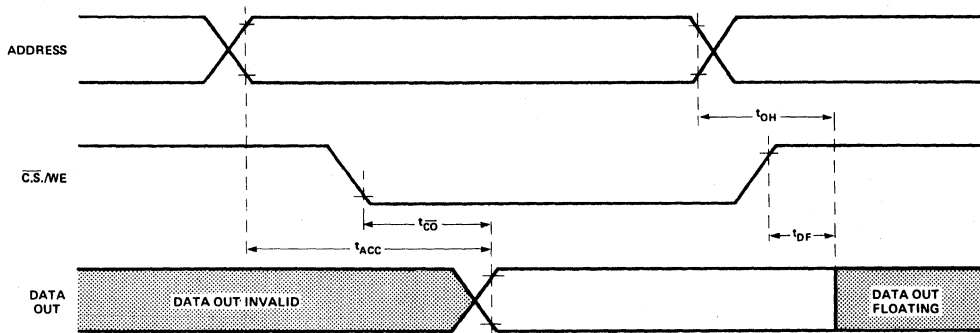
Output Load: 1 TTL gate and $C_L = 100\text{pF}$

Input Rise and Fall Times: $\leq 20\text{ns}$

Timing Measurement Reference Levels: 0.8V and 2.8V for inputs; 0.8V and 2.4V for outputs

Input Pulse Levels: 0.65V to 3.0V

Waveforms



MCS-80